






28/140-152 New Canterbury Road Petersham NSW

2  **2**  **1** 

Looking for a 2 bedroom unit?

Look no further, this secured with intercom property features UNDERCOVER SECURE CAR SPACE and is located close to Petersham public school, Petersham park and within a 10 minute walk to Petersham train station.

Features include but not limited to:

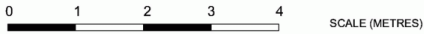
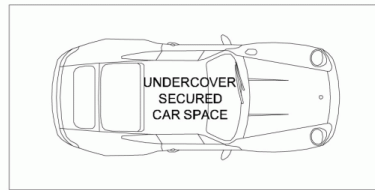
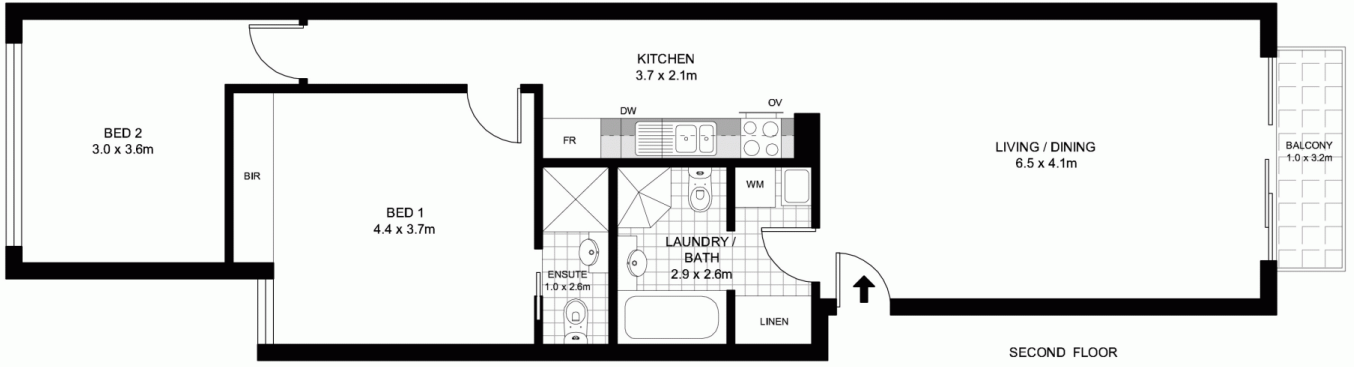
- Beautiful timber flooring,
- Timber venetians throughout,
- Built-in robes and en-suite to main bedroom,
- Private balcony,
- Internal laundry with dryer,
- Modern Gallery style kitchen with marble stone benchtop, microwave, gas cooking and stainless steel dishwasher and oven.

View : <https://www.crystalrealty.com.au/lease/nsw/inner-west/petersham/residential/unit/5771925>



Sean Czuczman

This property is a must to inspect as it will not last so Call our office on 9519 4644 or email me at



DISCLAIMER: PLANS SHOWN ARE ONLY INDICATIVE OF LAYOUT. DIMENSIONS ARE APPROXIMATE. THESE PLANS ARE UNDER NO CIRCUMSTANCES TO BE USED FOR ANY FUTURE PLANNING PURPOSES. PROSPECTIVE PURCHASERS/LESSEES MUST RELY ON THEIR OWN ENQUIRIES. NOTE: MEASUREMENTS TAKEN FROM BACK OF ROBES.

- FR - FRIDGE
- OV - OVEN
- DW - DISHWASHER
- WM - WASHING MACHINE
- BIR - BUILT-IN ROBE



28 / 140 NEW CANTERBURY ROAD

PETERSHAM