




**6/73 Brighton Avenue Croydon Park NSW**

2  1  1 

Quietly positioned to the rear of a secure boutique block of eight, this north east facing top floor apartment delivers the perfect lifestyle choice for owner-occupiers and investors in an ultra-convenient location. Fresh and airy and brimming with natural light, it features an open plan living and dining area plus a neat kitchen with a stainless steel oven, electric cooktop and ample cupboard storage. The two bedrooms are appointed with built-in wardrobes and the main bedroom opens to a sunny balcony. Additional features include an original full-sized bathroom plus a shared laundry and a car space. Although immediately liveable and ready to enjoy, it presents superb scope to enhance/renovate and put your creative stamp.

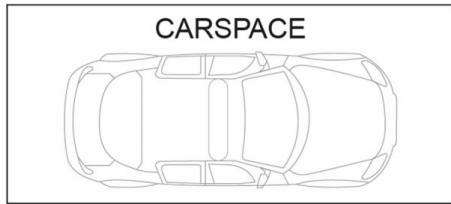
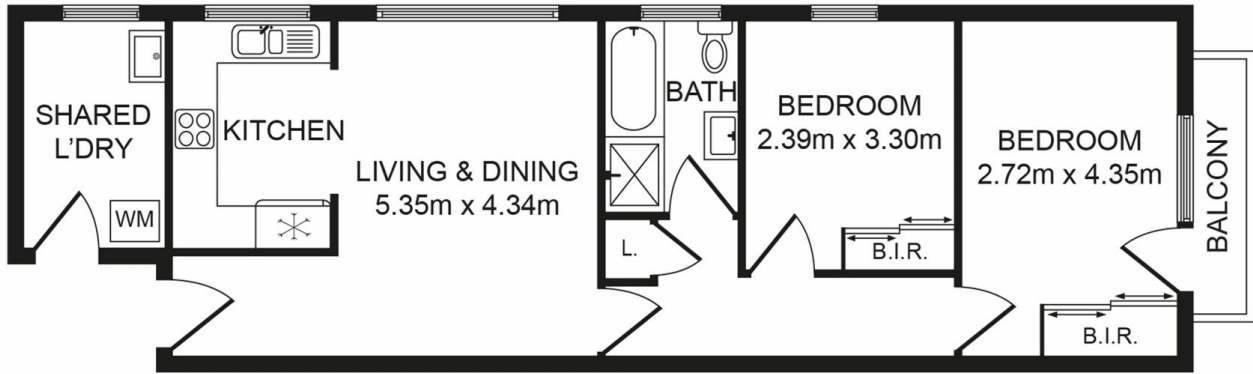
**Type** : Apartment  
**Price** : For Sale \$599,000  
**View** : <https://www.crystalrealty.com.au/sale/nsw/inner-west/croydon-park/residential/apartment/8091650>

? NE facing aspect allows an abundance of natural light



**May Aoun**  
**0416 027 086**

[For full version visit the website](#)



(NOT IN POSITION)

### 6/73 Brighton Ave, Croydon Park NSW 2133

Whilst every attempt has been made to ensure the accuracy of the floor plan contained here, measurements of doors, windows, room and any other items are approximate and no responsibility is taken for any error, omission or mis-statement. This plan is for illustration purpose only and should be used as such by any prospective purchaser. The service, systems and appliances shown have not been tested and no guarantee as to their operability or efficiency can be given.

Photos & Floor Plan created by SMT Clicks | 0478 099 674

